

TOOLS DIRECT

Living Made Easy



WWW.TOOLSDIRECT.IN



About Us

Tools Direct is an authorized **top quality tools supplier & exporter** based out of India.

We serve as an E-commerce portal for shopping industrial tools and supplies, which spreads across the Middle East and India under the group name 'APEX TOOLS'. We cater to both B2S as well as B2C sectors across the two countries. Currently we are operational in UAE, Qatar, Saudi Arabia and India with exclusive 'Sourcing and Distribution' centers in the UK and USA.

www.toolsdirect.in



TABLE OF CONTENTS



SMT EQUIPMENT



SMT PERIPHERALS



SMT CONSUMABLES



SERVICE & SUPPORT



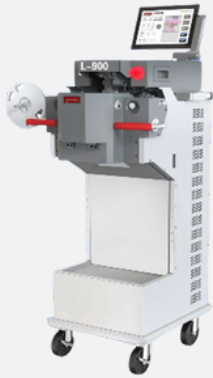
SMT EQUIPMENT

PCB HANDLING CONVEYORS

- The board handling equipment of SMT
- Automatic Labeling Machine
- Automatic board loader & unloader
- High-speed vacuum loader
- PCB turning machine and more.



ADVANCED AUTO SPLICING MACHINES

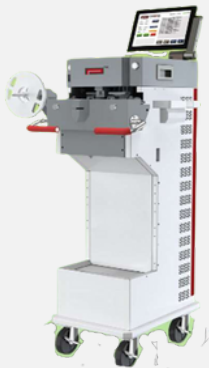
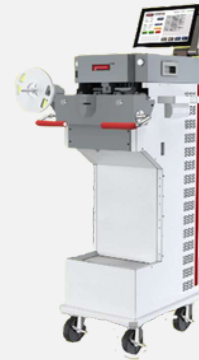


L900

MULTI-FUNCTION SPLICING SYSTEM Automatic splicing for 8 \ 12 \ 16 \ 24mm width carrier tapes (01005 capable)

L3

SMT AUTO SPLICING SYSTEM with 8mm Carrier Tape Vision Inspection System



L4

with LCR Function (8mm) Special Option Measurement of resistance and a capacitance value function

STENCIL INSPECTION MACHINES



SVII-K80S

Automatic Stencil
Inspection System

SVII-K90

Automatic Stencil Inspection
System with Squeegee
Detection Function



CLEANING MACHINE

- The front-end equipment cleaning machine
- The cleaning machine starts cleaning, rinsing and air drying of the stencil, which is simple and convenient.
- It can greatly save labour cost
- Reduce labour intensity of operators without special personnel operation



DISPENSING & COATING MACHINE



COATING MACHINE

Selective Conformal Coating Machine

- Suitable for panelized or palletized PCBs, high throughput requirements, process flexibility and large area coating

DISPENSING MACHINE

Multi-functional Fluid Dispensing System

- Capable for dispensing adhesives and sealants
- Fast dispensing speed and short cycle time



PLASMA TREATMENT SYSTEM

Selective atmospheric plasma treatment

- Omni-directional surface cleaning
- The anisotropic plasma can enter the ultra-narrow slit cleaning



A close-up, high-angle photograph of a printed circuit board (PCB) during surface mount technology (SMT) assembly. Two blue-handled soldering irons are positioned over the board, their tips pointing towards the center. The board is populated with various components, including a large black integrated circuit (IC) with a gold wireframe, several smaller surface-mount components, and a large black component on the right. The background is a soft, out-of-focus blue, suggesting a clean industrial environment.

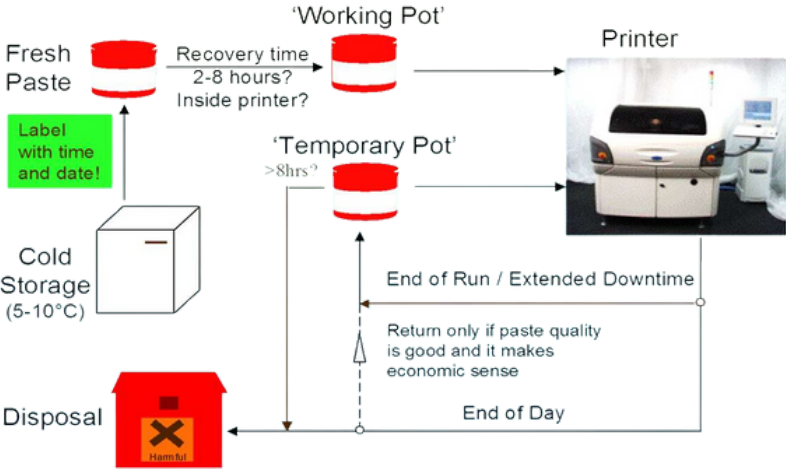
**TOOLS
DIRECT**

**SMT
PERIPHERALS**

SOLDER PASTE FIFO MANAGEMENT SYSTEM

Solder Paste FIFO management system can easily monitor the solder paste temperature warm up time, also which can record the required data of solder paste to achieve the set temperature/time after taken out of the refrigerator.

SOLDER PASTE USAGE / WORKING CYCLE



SOLDER PASTE MIXER / SOFTENER

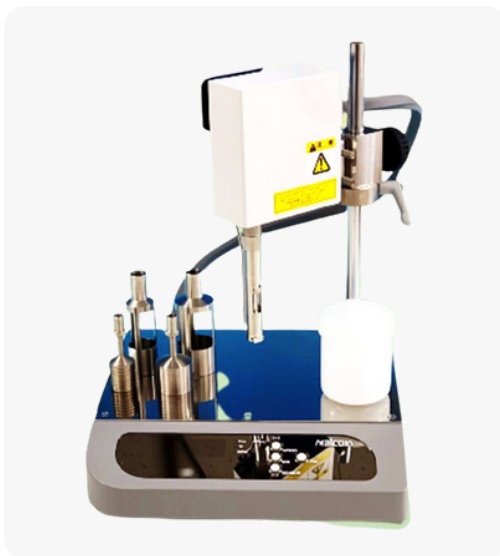
Now a solder paste can be pulled from the refrigerator and ready on the stencil, in less than 15 minutes!

- Unlike hand mixing, the Solder Paste Mixer is a non-contaminating mixer which utilizes pseudo planetary motion to stir the solder paste.
- The resulting centrifuge force causes the solder paste within the container to repeatedly fold over itself, thereby mixing and softening itself.



SPIRAL VISCOMETER

- Unique spiral pump viscometer is the standard for electronic material management
- Achieves high precision measurement in a wide range from high viscosity to low viscosity.



AUTOMATIC OPTICAL INSPECTION (AOI)

- 3D Automatic Optical Inspection equipment (AOI systems)
- Through Hole AOI and
- Solder Paste Inspection systems (SPI) for advanced PCB inspection, test and measurement.

24-bit imaging technology that provides powerful process control and maximises production yields for companies involved in electronics assembly and microelectronics.





SMT CONSUMABLES

ENGINEERED SOLVENT



PCB & PCBA CLEANING

Specially designed for clean all types solder pastes and fluxes while providing excellent material compatibility

STENCIL CLEANING (USC & Machine)

SMT AUTO SPLICING SYSTEM with 8mm Carrier Tape Vision Inspection System



BENCH TOP & MAINTENANCE

Specially formulated for reflow ovens, Wave & general equipment maintenance cleaning



ECO ROLLS

- Are globally proven eco-friendly
- Cost effective & reliable
- Providing high- performance cleaning

QUALITY

- ISO certified
- RoHS standard
- Air Permeability Tested

CUSTOMER FRIENDLY

- Standardized & customized rolls supporting multiple solder paste printing platforms
- Variety of wiper roll materials available

TRACEABILITY

- Unique Batch ID for easy traceability
- QR code compatible

UNIQUE LABEL DESIGN

ECO WIPER ROLL – 530X510X11m
BATCH NO – WF2241071



PROCESS CONSUMABLES

BOM SQUEEGEE
USC



ECO WIPER
ROLLS



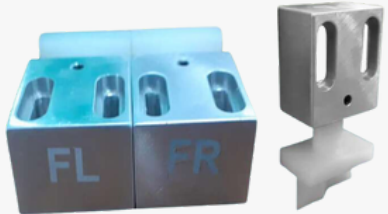
DEK BOARD
CLAMP



SQUEEGEE HOLDER &
BLADE



SELF ADJUSTING PASTE
DEFLECTORS



PROCESS CONSUMABLES

WAVE SOLDER ANTIOXIDANT



REWORK CONSUMABLES



ECO SOLDER WIRE



SOLDER BAR (Anti Dross)



SOLDER PASTE



NANOCOATING

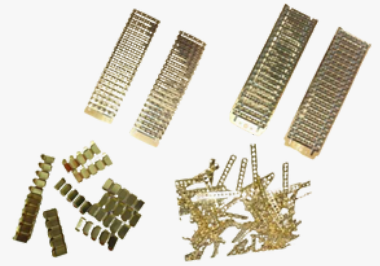


P & B CONSUMABLES

P & P NOZZLE [FUJI, SAMSUNG, SIPLACE,
PANASONIC, YAMAHA



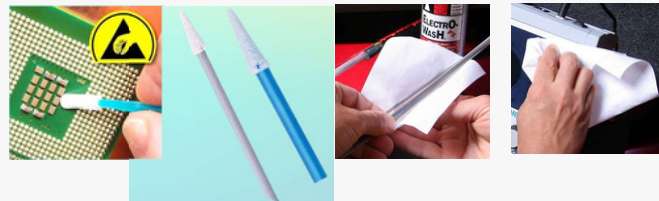
SMT SPLICE
CLIPS



SMT COVER
TAPE EXTENDER

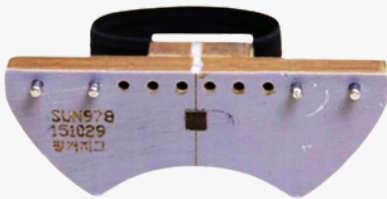


ESD STATIC CONTROL
SWABS & WIPES



SPLICING CONSUMABLES

FINGER
JIG



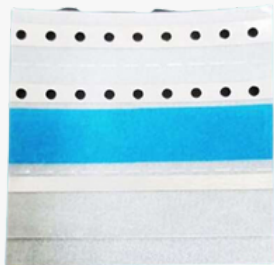
SPLICE
CUTTING JIG



SPLICE
STATION



SPLICE
TAPES



SMT CUTTING
TOOL



CONFORMAL COATING



ESD COATING

ZERO CHARGE
FLOOR COATING



ESD SAFE
COATING



CONTACT
CLEANER



BATCH STENCIL
CLEANER



ISO PROPYL ALCHOL -IPA



FLUX REMOVERS



SOLDER MASK & FREEZER

WATER SOLUBLE MASK



WATER SOLUBLE TEMPORARY SOLDER MASK



CONTACT CLEANER



FREEZER



ANTI-STATIC FREEZER



PEELABLE SOLDER MASK



COATING REMOVERS & REWORK PEN

CONFORMAL COATING STRIPPER



CONFORMAL COATING REMOVER PEN



GREEN OVERCOAT PEN



NO CLEAN FLUX DISPENSING PEN





**TOOLS
DIRECT**

**SERVICE &
SUPPORT**

SERVICE & SUPPORT



SERVICE SUPPORT

- Ecopmin Technologies provides on-site repairs and maintenance for All SMT equipment No need to get in touch with your Equipment's OEM
- Our SMT service Experts are located throughout INDIA to ensure efficient service Simply contact Ecopmin service headquarters online or by phone and we can dispatch SMT repair specialists to get your systems up and running with minimal downtime.



SPARE PARTS SUPPORT

- Ecopmin SMT Spare Parts Service ensures highly competitive delivery times – minimizing your down time and maximizing your productivity
- We even run our own spare parts center, which means less wait for the replacements We can conduct failure analysis, repair and suggest prevention technique to minimize your COO.



SERVICE PACKAGES

- AMC contract (Service & Spares) Service Coupon Packages
- Short term contract
- Machine / Process Audit contract Training Packages
- Installation / commissioning / Monitoring support
- Warranty / Non-Warranty Support Special projects
- Product Evaluation
- Product demonstration.




GET GREAT DISCOUNTS!

[SHOP NOW](#)

BECOME A B2B SELLER

[CONTACT US](#)

Order on WhatsApp
+91 8593078990 

Call us now
+91 95622 79990 

Email us at
support@toolsdirect.in 

[FOLLOW US](#) 

